

**INSTINCT<sup>®</sup> | PRO**

**Plumbing Tools**

# Plumbing Tools

## Guarantees

**1** Year  
on Plumbing Tools



Take a closer look at the  
SweatBOX® features video



### Monument Masters SweatBOX®

The SweatBOX® is the ultimate plumbers soldering tray.

The SweatBOX® features a flame retardant engineering grade plastic with a patented clamp for holding different sizing of copper pipe up to 22mm or ¾".

There is a silicone strip edge to the Sweatbox ensuring heat is not conducted from the hot copper pipe to the plastic of the Sweatbox or the clients property. Adhesive rubber feet are included, helping to prevent scratches to surfaces. The sealed compartments are ideal for holding a gas bottle, separated blowtorch and all the essentials needed for soldering or sweating a joint. There's even a compartment for flux brushes.

Finish – Yellow

Dimensions – 435(h) x 330(w) x 240(d) mm

**MAST20201L**

**Guarantees**

**1** Year  
on Plumbing Tools

# Plumbing Tools

## Soldering + Brazing

### Omat® Soldering + Brazing Pad

Quantity – 1  
Dimensions –  
240(h) x 240(w) x 5(d) mm (INST2361)  
155(h) x 155(w) x 5(d) mm (INST2363)

#### 250mm (10") Soldering + Brazing Pad

The INST2361 OMAT® is a patented, slotted protection mat for soldering pipes and tubes to protect walls, cables, carpets and other flammable material. The OMAT® slot has an overlap at the back which enables the protective mat to go either side of the tube or pipe being soldered so as to protect the surrounding area from burning or scorching as well as reducing the risk of fire. It is particularly useful under kitchen units and on pipes perpendicular to the wall where the use of a non-slotted mat would not easily cover the area. The OMAT® is designed for use on pipes and tubes 15 to 22mm diameter.

#### 150mm (6") Soldering + Brazing Pad

A patented, slotted protection mat or pad for soldering and brazing 15mm and 22mm copper tube and pipe. The size of the mat is 150mm x 150mm (6" x 6") for use in really awkward places where the larger sizes of Omat® would obstruct easy access of the soldering torch. It is designed to protect walls, cables, carpets and other flammable material surrounding a pipe being soldered/brazed. The slot in the Monument 2363L Micro Omat® has an overlap at the back which enables the protective mat to go either side of the tube or pipe being soldered/brazed so as to protect the surrounding area from burning or scorching, as well as reducing the risk of fire. It is particularly useful under kitchen units and on pipes perpendicular to the wall where the use of a non-slotted mat would provide inadequate cover of the area to prevent damage.

**INST2361** Omat® 250mm (10") Soldering + Brazing Pad

**INST2363** Omat® 150mm (6") Soldering + Brazing Pad



**Have you thought of Soldering Paste?**

Use Masterflux Flux Soldering paste, suitable for all gas & water capillary joint applications.

Page 56



### 300mm (12") Soldering + Brazing Pad

Quantity – 1 of Each  
Dimensions – 310(h) x 310(w) x 10(d) mm

**INST2350**



### Flux Brushes

Quantity – Pack of 5  
Dimensions – 200(h) x 10(w) x 10(d) mm

**INST3015-1**



### Flux Brushes

Quantity – Pack of 10  
Dimensions – 200(h) x 10(w) x 10(d) mm

**INST3015-10**

# Plumbing Tools

Guarantees

**1** Year  
on Plumbing Tools

## Monument Masters + Bending

### 15mm Pipe Bender (With INST1715 15mm Copper Pipe Cutter)

The Pipe Bender is a single sized pipe bender for 15mm copper pipe (0.7mm wall).

Quantity – 1

Dimensions – 470(h) x 190(w) x 65(d) mm

#### Features + Benefits

Less fiddly – with the integrated hook and nylon guide, the integrated hook stop won't flop from side to side and the guide(s) won't fall out

Lighter in the hand than a combi – the pipe bender weighs 1.9kg

Less cumbersome – you are only using a bender for the size of pipe being bent

Better sight lines – as the bend is in the same plane as the arms of the bender it is easier to line up by eye

Smaller than a combi – the pipe bender has an arm length of 40cm approx. (a combi arm length is 65cm). It even fits in a tool bag

**Best Seller**



INST1215AV



### 15mm + 22mm Copper Pipe Bender (Guides)

Quantity – 1

Dimensions – 700(h) x 135(w) x 155(d) mm

The INST2600 15mm and 22mm Copper Pipe Bender is designed to professionally bend BSEN1057 15mm and 22mm copper pipe and 15mm stainless steel tube. The aluminium formers are marked with bending angles of 30, 45 and 90 degree offsets allowing for accurate bending. The Instinct Pro Pipe Bender is supplied with replaceable 15mm and 22mm aluminium bending guides.

INST2600



### 15mm Copper Pipe Bender Guide

Quantity – 1

Dimensions – 165(h) x 20(w) x 15(d) mm

INST2601



### 22mm Copper Pipe Bender Guide

Quantity – 1

Dimensions – 230(h) x 22(w) x 25(d) mm

INST2603

Guarantees

**1** Year  
on Plumbing Tools

# Plumbing Tools

## Copper Pipe Cutting + Deburring



### 10mm Copper Pipe Cutter

Quantity – 1  
Dimensions – 45(h) x 45(w) x 30(d) mm

INST1810N



### 15mm Autocut® Copper Pipe Cutter

Quantity – 1  
Dimensions – 50(h) x 50(w) x 30(d) mm

INST1715



### 22mm Autocut® Copper Pipe Cutter

Quantity – 1  
Dimensions – 58(h) x 58(w) x 30(d) mm

INST1722



### 28mm Autocut® Copper Pipe Cutter

Quantity – 1  
Dimensions – 65(h) x 65(w) x 30(d) mm

INST1728



### Spare Wheels (Autocut® + Pipeslice®)

Quantity – Pack of 2  
Dimensions – 35(h) x 40(w) x 40(d) mm

INST0269



### 15mm + 22mm Autocut® Copper Pipe Cutter

Quantity – 1  
Dimensions – 55(h) x 55(w) x 40(d) mm

INST17151722

### 15mm + 22mm Autocut® Copper Pipe Cutters (Restricted Access Handles)

Quantity – Pack of 2  
Dimensions – 170(h) x 70(w) x 30(d) mm

The Restricted Access Handles are designed as an aid for rotating the INST1715 + INST1722 in confined spaces where the users' hands will not fit. Made from bright zinc plated steel the handles engage in the outer casing of the INST1715 + INST1722. They are designed to be easily slipped on and off of the cutter body from either side of the pipe cutter, even when it is engaged on the pipe to be cut.



INST1739

# Plumbing Tools

Guarantees

**1** Year  
on Plumbing Tools

## Copper Pipe Cutting + Deburring



### Size 3mm-22mm Copper Pipe Cutter

Quantity – 1  
Dimensions – 45(h) x 70(w) x 30(d) mm

INST0264



### Size 4mm-28mm Copper Pipe Cutter

Quantity – 1  
Dimensions – 185(h) x 55(w) x 30(d) mm

INST0265



### Size2A 12mm-43mm Copper Pipe Cutter

Quantity – 1  
Dimensions – 220(h) x 65(w) x 40(d) mm

INST0266



### 35mm Internal + External Pipe Deburrer

Quantity – 1  
Dimensions – 75(h) x 45(w) x 45(d) mm

INST0365



### 12-54mm Inside/Outside Deburrer

Quantity – 1  
Dimensions – 85(h) x 65(w) x 65(d) mm

INST0374



### Spare Wheel (Size 0-1-2A Copper Pipe Cutters)

Quantity – Pack of 2  
Dimensions – 40(h) x 55(w) x 55(d) mm

INST0273



### 15mm + 22mm Copper Pipe + Fitting Brush

Quantity – 1  
Dimensions – 195(h) x 45(w) x 30(d) mm

INST3033



### Deburring Tool

Quantity – 1  
Dimensions – 143(h) x 15(w) x 10(d) mm

INST3020



### Cleaning Abrasive Strips

Quantity –  
10 Pack (INST3024), Twinpack (INST3024-6)  
Dimensions –  
2.55(h) x 40(w) x 10(d) mm (INST3024)  
1.40(h) x 60(w) x 40(d) mm (INST3024-6)

INST3024

Cleaning Abrasive Strips

INST3024-6

3m Rolls of Cleaning Abrasive Strips

**Guarantees**

**1** Year on Plumbing Tools

# Plumbing Tools

## Plastic Pipe Cutting



**6-28mm Plastic Pipe Cutter**  
Quantity – 1  
Dimensions – 195(h) x 70(w) x 20(d) mm

INST2644



**Burrfect Square Plastic Waste Pipe Deburrer**  
Quantity – 1  
Dimensions – 80(h) x 80(w) x 3(d) mm

INST2116



**20-42mm Plastic Pipe Cutter**  
Quantity – 1  
Dimensions – 220(h) x 125(w) x 25(d) mm

INST2645



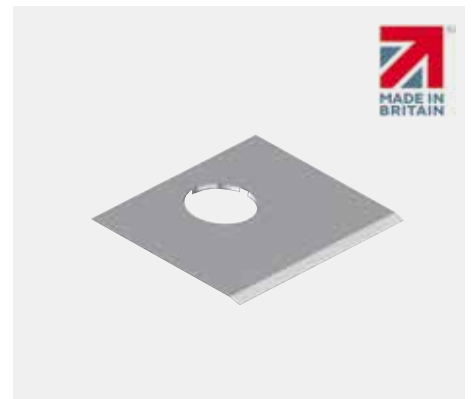
**15mm + 22mm Autocut® (Plastic Pipe Cutter)**  
Quantity – 1  
Dimensions – 75(h) x 75(w) x 40(d) mm (INST0115)  
70(h) x 70(w) x 40(d) mm (INST0122)

INST0115	15mm
INST0122	22mm



**1 1/4" + 1 1/2" Autocut® (Plastic Waste Pipe Cutter)**  
Quantity – 1  
Dimensions – 70(h) x 70(w) x 50(d) mm (INST1114)  
70(h) x 70(w) x 55(d) mm (INST1112)

INST1114	1 1/4"
INST1112	1 1/2"



**Spare Blades for Autocut® (Plastic Pipe Cutter)**  
Quantity – Pack of 5  
Dimensions – 50(h) x 50(w) x 5(d) mm

INST0100



Take a closer look at the Autocuts tool in action!



# Plumbing Tools

Guarantees

**1** Year  
on Plumbing Tools

## Sawing + Cutting

### 300mm (12") Hacksaw

Quantity – 1

Dimensions – 440(h) x 140(w) x 20(d) mm

The INST1921D 300mm (12") Hacksaw has a die-cast aluminium handle and square section tubular steel frame, which combine to give a lightweight hacksaw with great tensile strength. Adjusts to give 45° angle for flush cutting.



INST1921D



### Junior Hacksaw

Quantity – 1

Dimensions – 245(h) x 75(w) x 10(d) mm

INST2000

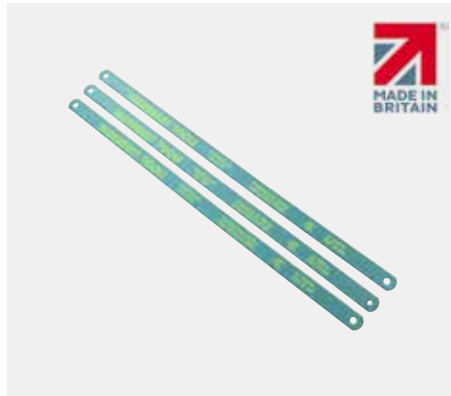


### Folding Knife

Quantity – 1

Dimensions – 75(h) x 55(w) x 10(d) mm

INST1023



### 300mm (12") Hacksaw Blades

Quantity – Pack of 3

Dimensions – 310(h) x 40(w) x 3(d) mm

INST1923



### Spare Blade (Junior Hacksaw)

Quantity – Pack of 10

Dimensions – 160(h) x 35(w) x 10(d) mm

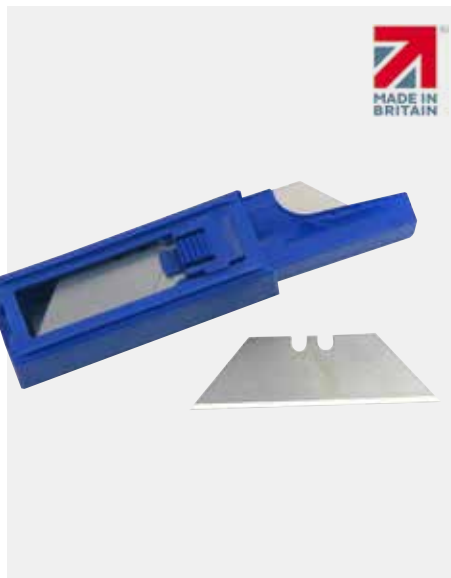
INST1120

### Standard Trapezoidal Knife Blades

Quantity – Pack of 10

Dimensions – 65(h) x 65(w) x 20(d) mm

The INST1024 Pack of Ten Standard Trapezoidal Knife Blades. Trimming knife blades are suitable for the trade trimming knife. Supplied in a dispenser.



INST1024



### Six Flat Bits

Quantity – Pack of 6

Dimensions – 155(h) x 50(w) x 20(d) mm

INST1950



**Guarantees**

**1** Year on Plumbing Tools

# Plumbing Tools

## Radiators



**Universal Radiator Valve Spanner**

Quantity – 1  
Dimensions – 110(h) x 40(w) x 20(d) mm

INST2052



**Radiator Step Wrench + Ratchet**

Quantity – 1  
Dimensions – 275(h) x 45(w) x 30(d) mm

INST2048



**1/2, 3/4 + 1" Lockshield Radiator Valve Key**

Quantity – 1  
Dimensions – 85(h) x 85(w) x 20(d) mm

INST2056



**Four-Way Multipurpose Key**

Quantity – 1  
Dimensions – 75(h) x 75(w) x 20(d) mm

INST2059



**TRV Tail Driver**

Quantity – 1  
Dimensions – 60(h) x 30(w) x 30(d) mm

INST2166



**Radiator Bleed Keys**

Quantity – 1  
Dimensions – 35(h) x 68(w) x 5(d) mm

INST2058-1



**Gas Meter + Radiator Bleed Key**

Quantity – 1  
Dimensions – 90(h) x 30(w) x 20(d) mm

INST2050



**3-in-1 and 4-in-1 Radiator Valve Spanners**

Quantity –  
Pack of 1 (INST2053 + INST2054)  
Pack of 2 (INST2055)  
Dimensions – 135(h) x 60(w) x 20(d) mm

INST2053 Radiator Valve Spanner 10mm Square + 5mm Balancing Tool

INST2054 Radiator Valve Spanner 12mm Hex., Air Release + 4mm Balancing Tool

INST2055 Twinpack

# Plumbing Tools

Guarantees

**1** Year  
on Plumbing Tools

## Taps + Stopcocks



### Contractors Telescopic Back Nut Wrench

Quantity – 1  
Dimensions – 280(h) x 150(w) x 30(d) mm

INST0781



### Domestic Mains Water Mini Stopcock Key

Quantity – 1  
Dimensions – 220(h) x 45(w) x 40(d) mm

INST0331



### Parallel Bush Tap Reseater (Three Cutters)

Quantity – 1  
Dimensions – 135(h) x 40(w) x 50(d) mm

INST0450



### 1050mm (42") Mains Water Tapered 1/2" + 3/4" Stopcock Key

Quantity – 1  
Dimensions – 1060(h) x 160(w) x 20(d) mm

INST0339



### Pro Adjustable Basin Wrench (Two Jaws)

Quantity – 1  
Dimensions – 255(h) x 90(w) x 80(d) mm

INST0345



### 27 x 32mm Tap Back Nut Box Spanner

Quantity – 1  
Dimensions – 157(h) x 40(w) x 40(d) mm

INST0319



### 45 x 50mm Waste Nut Box Spanner

Quantity – 1  
Dimensions – 200(h) x 60(w) x 50(d) mm

INST0308



### 8mm-13mm Monobloc Box Spanners

Quantity – Set of 3  
Dimensions – 185(h) x 45(w) x 20(d) mm

INST3240



### Malleable Cast Basin Back Nut Wrench

Quantity – 1  
Dimensions – 260(h) x 27(w) x 45(d) mm

INST0327

**Guarantees**

**1** Year on Plumbing Tools

# Plumbing Tools

## Compression Fittings + Immersion Heaters



**Compression Fitting Nut Spanners**

Quantity – Pack of 2  
Dimensions – 160(h) x 55(w) x 10(d) mm

INST2042



**Box Ring Immersion Heater Spanner**

Quantity – 1  
Dimensions – 295(h) x 50(w) x 30(d) mm

INST0358



**Pro Cast Immersion Heater Spanner 86mm A/F**

Quantity – 1  
Dimensions – 250(h) x 110(w) x 50(d) mm

INST0361



Additionally there is a power tool drive to make this indispensable tool even more useful!

**Just remember to have your drill set to drive not reverse.**

**15mm + 22mm Compression Fitting Olive Puller**

Quantity – 1  
Dimensions – 150(h) x 60(w) x 40(d) mm

The INST2036 works by engaging the tool in the end of the copper pipe and then winding the appropriate bush - 15mm and 22mm included - counter clockwise until it stops at the olive to be removed. The threaded bush is then screwed into the compression nut which is held captive on the pipe on the other side of the olive. Then by rotating the handle clockwise the compression fitting nut is drawn up the pipe and pulls the olive off the pipe without damaging it.

INST2036



**22mm Compression Fitting Olive Cutter**

Quantity – 1  
Dimensions – 192(h) x 55(w) x 25(d) mm

INST2031



**15mm Compression Fitting Olive Cutter**

Quantity – 1  
Dimensions – 195(h) x 55(w) x 20(d) mm

The INST2030 15mm and INST2031 22mm are designed to remove an olive from copper pipe without damage to the pipe and without producing swarf. The latest version includes replaceable, interchangeable and reversible tungsten carbide blades.

Not for use on steel olives.

INST2030

# Plumbing Tools

Guarantees

**1** Year  
on Plumbing Tools

## Boilers, Flues + System Testing

### 30mb Gas Test Gauge

Quantity – 1

Dimensions – 550(h) x 75(w) x 30(d) mm

The INST0257 30mb Gas Test Gauge is Made in Britain and is made from tough plastic. It is used both for testing pipework installations with air for leaks before the introduction of gas and for checking and setting correct gas pressures on domestic and commercial appliances. Extruded cover slides off and may be clipped over the base for standing the tool vertically during use. Hanging tab permits vertical hanging from suitable protrusions. Marked in millibars, the scale adjusts for zeroing the water level.



INST0257



### Mains Water Pressure Test Gauge 11 Bar x 3/4" BSP

Quantity – 1

Dimensions – 285(h) x 55(w) x 40(d) mm

INST1510

### Dry Test Kit 15mm x 4 Bar

Quantity – 1

Dimensions – 130(h) x 55(w) x 30(d) mm

The INST1512 Pipe Dry Testing Kit is ideal for dry testing pipe work during and after installation. It has an easy to read triple scale bar, psi and kPa and is suitable for water, air, gas and petroleum oil pipes up to 4 bar, and for testing combi systems. Can be left on test, while flooring is laid to reveal any nail damage also test hot and cold supplies separately to ensure pipes are not crossed. Fitted with a Schrader Valve and 15 mm push fit fitting for quick and easy assembly and has a rubber boot for added protection.



INST1512



### Flue Brushes

Quantity – Pack of 3

Dimensions – 500(h) x 120(w) x 55(d) mm

INST3014



### 15mm + 22mm Pipe End Plugs

Quantity – 1 of Each

Dimensions – 65(h) x 65(w) x 20(d) mm

INST1368



### 15m Drain Down Hose

Quantity – 1

Dimensions – 280(h) x 240(w) x 175(d) mm

INST2404



### 2m Spare Gas Test Gauge Hose (LPG)

Quantity – 1

Dimensions – 260(h) x 40(w) x 30(d) mm

INST1731

**Guarantees**

**1** Year  
on Plumbing Tools

# Plumbing Tools

## Wrenches + Spanners



**150mm (6") Wide Jaw Adjustable Wrench 34mm Cap**

Quantity – 1  
Dimensions – 165(h) x 65(w) x 15(d) mm

**INST3140**



**200mm (8") Wide Jaw Adjustable Wrench 38mm Cap**

Quantity – 1  
Dimensions – 210(h) x 70(w) x 10(d) mm

**INST3141**



**250mm (10") Wide Jaw Adjustable Wrench 50mm Cap**

Quantity – 1  
Dimensions – 290(h) x 95(w) x 20(d) mm

**INST3143**



**Mongoose 175mm (7") One Handed Slip Joint Pliers**

Quantity – 1  
Dimensions – 180(h) x 45(w) x 20(d) mm

**INST2071**



**Mongoose 250mm (10") One Handed Slip Joint Pliers**

Quantity – 1  
Dimensions – 245(h) x 50(w) x 20(d) mm

**INST2072**



**Mongoose 300mm (12") One Handed Slip Joint Pliers**

Quantity – 1  
Dimensions – 300(h) x 55(w) x 20(d) mm

**INST2073**



**150mm (6") Thin Jaw Adjustable Wrench**

Quantity – 1  
Dimensions – 165(h) x 65(w) x 20(d) mm

**INST4140**



**200mm (8") Thin Jaw Adjustable Wrench**

Quantity – 1  
Dimensions – 210(h) x 70(w) x 20(d) mm

**INST4141**



**6" + 8" Thin Jaw Adjustable Wrenches**

Quantity – 1  
Dimensions – 210(h) x 70(w) x 40(d) mm

**INST41499**

# Plumbing Tools

Guarantees

**1** Year on Plumbing Tools

Miscellaneous



**Tape Measure (Backing Card)**

Quantity – 1  
Dimensions – 150(h) x 85(w) x 35(d) mm

<b>INST1961S5</b>	5m
<b>INST1962S8</b>	8m



**Screwdriver**

Quantity – 1  
Dimensions – 410(h) x 30(w) x 40(d) mm

<b>INST1518</b>	450mm (18") Flat Head Screwdriver
<b>INST1517</b>	300mm (12") No.2 Phillips Screwdriver



**20ft Drain Cleaner**

Quantity – 1  
Dimensions – 285(h) x 285(w) x 185(d) mm

**INST3310**



**D-End Manhole Lifting Keys**

Quantity – 1 x Set of Keys  
Dimensions – 105(h) x 125(w) x 30(d) mm

**INST1010**



**Handy Plunger**

Quantity – 1  
Dimensions – 320(h) x 125(w) x 90(d) mm

**INST1460**



**Toilet Plunger**

Quantity – 1  
Dimensions – 620(h) x 125(w) x 130(d) mm

**INSTM1600**



# INSTINCT® | PRO

Plumbing Tools



[www.instinctproducts.co.uk](http://www.instinctproducts.co.uk)

Manufactured and  
Distributed by **MONUMENT TOOLS**