

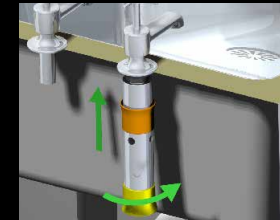
# MONUMENT STIFFNUTS<sup>®</sup>™

Patent Applied for.  
Registered Design Applied for.

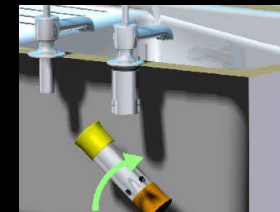
**MONUMENT TOOLS**

 **MADE  
IN  
BRITAIN**

Refer to the product outer label for contents. Not all Monument Stiffnuts kits contain all of the parts shown in these instructions.



**REMOVES  
STIFF  
TAP BACK NUTS**



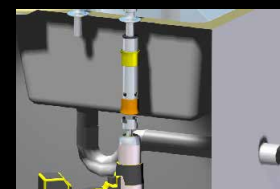
**RAPID  
TAP INSTALLATION  
TOOL**



**TOOL STAYS  
ON TAP TAIL  
WHEN IN USE**



**AVAILABLE for  
24 25 26 27 29  
& 32mm NUTS**



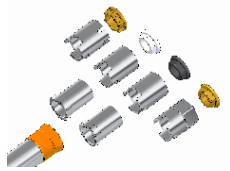
**USE CORDLESS  
DRILL ADAPTOR or  
RATCHET**

## REMOVING STIFF NUTS

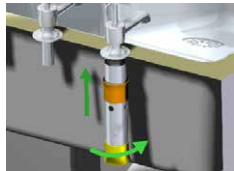
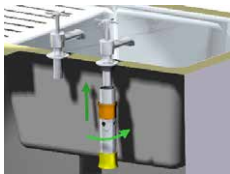
Depending on the tool purchased, the alignment and assembly of the tools is shown. Ensure the tube with the orange gripper is upwards.



The end of the tube with the orange gripper turns only the threaded sleeve. This end has shallow castellations.

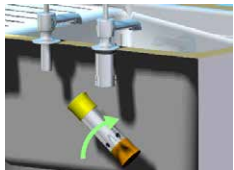
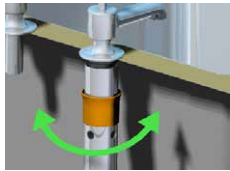


Once the tool is assembled, start to drive the tool onto the tail of the tap by turning the tool clockwise.



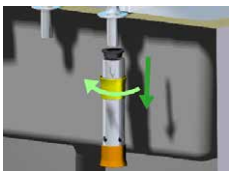
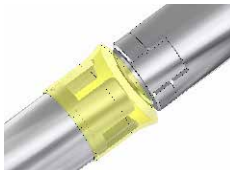
Rotate up to the nut. DO NOT engage fully onto the nut.

Engage, by hand, the socket onto the nut by moving the socket up onto the nut. Then, hand tighten the tube onto the nut.



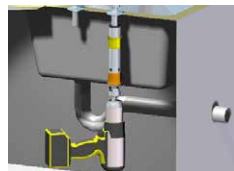
Remove the tube and rotate and refit, so the yellow gripper is now attached. The threaded sleeve and socket remain in place.

The end of the tube with the yellow gripper turns the threaded sleeve and the socket. This end has deep castellations.



Rotate the tool anticlockwise and the nut, socket and threaded sleeve are removed.

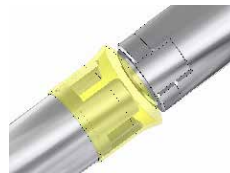
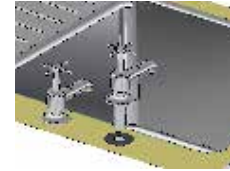
Use either a suitable tommy bar (not supplied) or a cordless drill with a Monument Stiffnuts driver to make the job easier and quicker.



Ensure the cordless drill is on the lowest torque setting.

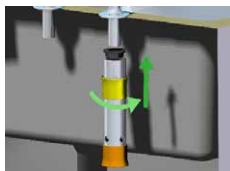
## RAPID TAP INSTALLATION

Use a Monument Stikfast Washer to locate the tap in position.



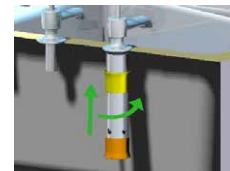
The end of the tube with the yellow gripper turns the threaded sleeve and the socket. This end has deep castellations.

Depending on the tool purchased, the alignment and assembly of the tools is shown. Ensure the tube with the yellow gripper is upwards.



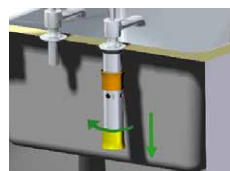
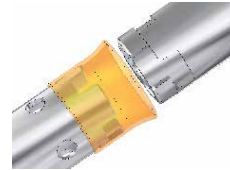
Fit nut onto the tail of the tap and with the yellow gripper upwards. Connect the tube to the threaded sleeve, to the socket of the nut and rotate the tool clockwise.

Rotate until the nut is in position. DO NOT overtighten as damage may be caused to the sink.



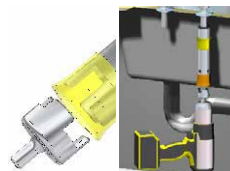
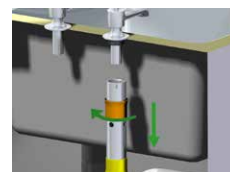
Remove and rotate the tube so the orange gripper is upwards and fit onto the threaded sleeve and the socket.

The end of the tube with the orange gripper turns only the threaded sleeve. This end has shallow castellations.



Rotate the tool anticlockwise.

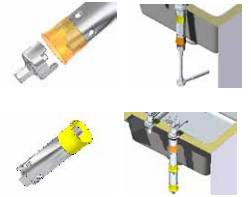
Continue rotating anticlockwise until the threaded sleeve and the socket are removed.



Use either a suitable tommy bar (not supplied) or a cordless drill with a Monument Stiffnuts driver to make the job easier and quicker. Ensure the cordless drill is on the lowest torque

## OPTIONS

Use the 1/2in. Hex driver in conjunction with a ratchet. The ratchet and socket driver give additional power and reach.



Use the extension tube to give extra reach. The extension tube gives an overall length of over 300mm

## STANDARD KITS

170N 1/2in.BSP 27mm & 3/4in.BSP 32mm 6 piece kit. Includes castellated tube, 3/8in. cordless driver and full instructions. Boxed.



173W 1/2in.BSP 25mm 27mm & 3/4in.BSP 29mm 32mm 10 piece kit. Includes castellated tube, extension tube, 3/8" cordless driver, 1/2in. ratchet driver and full instructions.



## PARTS

151G  
Tube



162N 26mm A/F Slotted Socket\*\*. For use with 1/2in. BSP Threaded Sleeve.



160H  
Extension Tube.



163R  
3/4in. BSP Threaded Sleeve.



156V  
1/2in. BSP Threaded Sleeve.



164U  
32mm A/F Socket. For use with 3/4in. BSP Threaded Sleeve.



158B  
25mm A/F Socket For use with 1/2in. BSP Threaded Sleeve.



159E 29mm A/F Slotted Socket\*\*. For use with 3/4in. BSP Threaded Sleeve.



157Y  
27mm A/F Socket For use with 1/2in. BSP Threaded Sleeve.



154P  
3/8in. Round Drive. For use with Cordless drill.



161K 24mm A/F Slotted Socket\*\*. For use with 1/2in. BSP Threaded Sleeve.



155S  
1/2in. Hex Drive. For use with 1/2in. Ratchet.



\*\* Slotted Sockets allow for slight variations in nut